



# Varifocal Lens Turret Camera

CODE: TURVIP-6-VW

IP

6MP

NDA  
Compliant



Motorised  
Zoom Lens



People &  
Vehicle Detection



30m IR  
Range



Built-In  
Microphone

## Camera

Image Sensor	1/2.7" CMOS
Video Compression	H.265 / H.264
Resolution	6MP (1 to 20fps), 4MP, 2MP (1 to 25fps)
Electronic Shutter	1/25s to 1/100,000s
Minimum Illumination	0.0236 lux at F2.0 (AGC on); 0.0085 lux at F1.2 (AGC on); 0 lux with IR
Light Range	50m
Lens	2.8mm to 12mm at F1.4 (Motorised)
Field of View	<b>Horizontal:</b> 90.5° to 32.9°
Image Correction	BLC, HLC, WDR, Digital NR

## Interfaces

Network	RJ45
Audio	1CH built-in microphone



## Functions

Remote Monitoring	SuperLive Plus Mobile App / NVMS (used with Viper NVR)
Web Browser	IE (plug-in required); Google Chrome; Microsoft Edge; Firefox; Safari
Online Connection	Simultaneous multi-stream real time transmission
Maximum Users for Monitoring	Up to 4 users (simultaneous)
Network Protocol	UDP, IPv4, IPv6, DHCP, NTP, RTSP, PPPoE, DDNS, SMTP, FTP, 802.1x, UPnP, QoS
Interface Protocol	ONVIF, GB-T/28181-2011



# Varifocal Lens Turret Camera

CODE: TURVIP-6-VW

IP

6MP



## Functions (continued)

AI Events	Motion Detection, VSA People & Vehicle Detection
Additional Functions	Watermark, Video Mask, Heartbeat, Illegal Login Lock

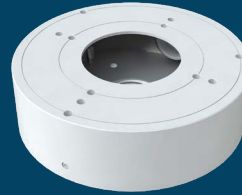


## Parameters & Dimensions

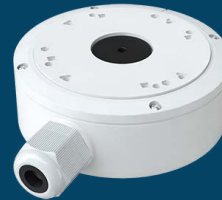
Power Supply	DC12V / PoE
Power Consumption	< 8W
Operating Environment	Temperature: -30°C to +60°C; Humidity: Less than 95% (non-condensing)
Dimensions	Ø111.5mm x 99.6mm
Weight	0.65kg
Installation	Ceiling or wall mounted
Protection Grade	IP67
Certificate	UKCA, CE, FCC, PSTI 2023, RoHS, WEEE, REACH (EC1907/2006)



## Compatible Accessories



**Cable Management Ring**  
CODE: VIP-RING-04-WH



**Cable Management Ring**  
CODE: VIP-RING-06-WH