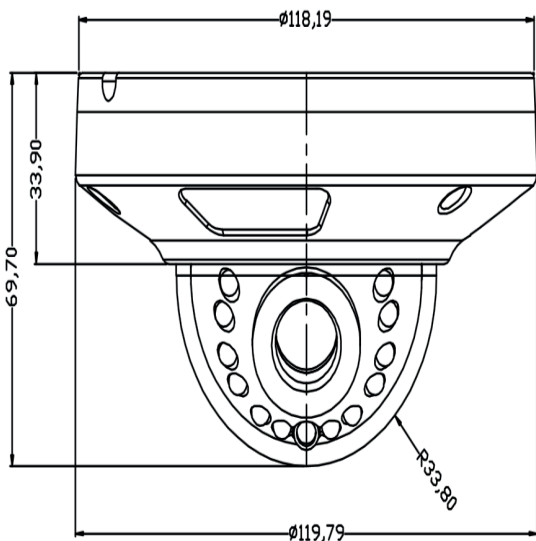




QVIS® | 5MP IR VANDAL DOME

KEY FEATURES

- 1/2.7" Progressive Scan CMOS
- Up to 5 Megapixel high resolution
- 3D Digital Noise Reduction
- DC12V & PoE
- Support H.265
- Built-in Audio
- IP67, IK10



SPECIFICATION	DOME-F5-A	(BUILT-IN AUDIO)
CAMERA		
Image Sensor	1/2.7" Progressive Scan CMOS Sensor	
Min. Illumination	0.05 Lux (F1.2), 0 Lux (IR on)	
Shutter Time	Auto, 1/25 ~ 1/10000s	
Lens	3.6mm	
Lens Mount	M12	
Day & Night	IR cut filter with auto switch	
Wide Dynamic Range	>80dB	
Digital Noise Reduction	3D NR	
S/N Ratio	≥50db (AGC OFF)	
Privacy Masking	Up to 4 areas	
Compression Standard		
Video Compression	H.264 / H.265 & MJPEG	
H.265 Code Profile	Main Profile	
Video Bit Rate	32KB ~ 16Mbps, support VBR, CBR	
Dual Stream	Dual-stream encoding	
Video		
Max. Image Resolution	2592 x 1944	
Resolution	2592 x 1944 / 2048 x 1536 / 1080P (1920 x 1080) / D1 (704 x 576) / VGA (640 x 480) / QVGA (320 x 240)	
Frame Rate	Main Stream: 2592 x 1944 (1 ~ 15fps); 2048 x 1536 / 1080P (1 ~ 25/30fps) Sub Stream: D1 / VGA / QVGA (1 ~ 25 / 30fps)	
Network		
Network Storage	Video record, Picture format	
Alarm Trigger	Manual, Automatic (motion detection, alarm, schedule, cycle)	
Protocols	IPv4, HTTP, TCP / IP, UDP, RTP, RTSP, RTCP, DNS, DDNS, DHCP, FTP, PPPOE, SMTP, UPNP	
Alarm Data Transmission	FTP, E-mail, Browser, CMS	
Access Standard	Support latest ONVIF/GB28181	
Interface		
Communication Interface	1 RJ45 10M / 100M Ethernet interface	
General		
Operating Conditions	-20°C ~ +55°C, Less than 90% RH	
Power Supply	DC12V / PoE (802.3af)	
Power Consumption	<3W	
Weather Proof	IP67	
IR Range	Up to 30M	
Dimensions	Φ118mm x 69.7mm	
Weight	400g (net), 490g (gross)	
Max. User Access	8/20 users, IE, Google, Firefox	
Smart Phone	Windows Mobile, iPhone, iPad, Android	

